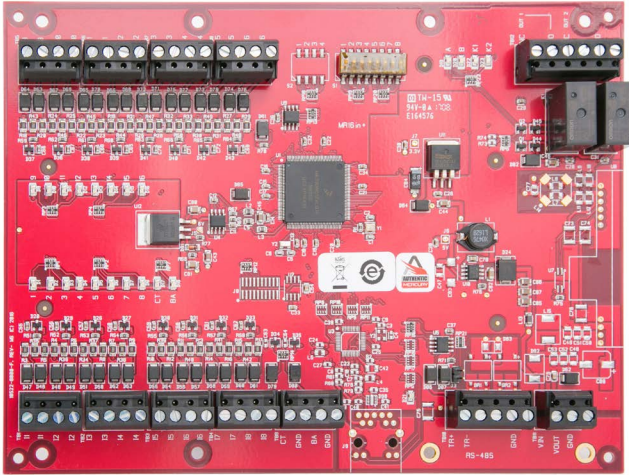


Series 3 - Serial I/O 16-input Interface panel

The Avigilon[™] Access Control Manager (ACM)[™] system supports open field hardware from Mercury Security allowing organizations to leverage investments in non-proprietary field hardware, with retrofit programs available for industry standard multi-device interface panels, power and communication controller boards, and intelligent controllers.



The Mercury Security AC-MER-CONT-MR16in Series 3 from Avigilon is an enhanced, high performance, reliable interface panel for monitoring high concentrations of inputs with the

Access Control Manager system. It offers an improved processor and increased memory with an embedded crypto memory chip for encryption support – enabling organizations to stay ahead of internal and external threats to achieve data security.

Each AC-MER-CONT-MR16in supports 16 general-purpose dry-contact inputs, configurable to be individually set for normally open, normally closed, supervised and non-supervised circuits. The AC-MER-CONT-MR16in provides access control and security monitoring through the AC-MER-CONT-1DR, AC-MER-CONT-2DR or the AC-MER-CONT-64DR intelligent controllers. The result is the flexibility, versatility and reliability required for demanding access control solutions.

The Access Control Manager system and Mercury Security Series 3 open field hardware provides the ultimate platform to complete the Avigilon physical access control security solution.

Open Architecture: High performance, reliable platform enables use of hardware with the Access Control Manager system

Easy Expansion: Adds functionality and flexibility to existing access control systems

Enhanced Security: Embedded crypto memory chip provides a secure layer of encryption to protect sensitive data

Versatile Interoperability: Same reliable interface and identical footprint as Series 2 Mercury IO modules, enabling seamless upgrades for existing deployments

KEY FEATURES

- Compact footprint and RS-485 connectivity
- 12 or 24V DC input power support
- Supports being clustered or distributed to best suit the installation environment
- Two programmable Form C relay outputs are configurable for fail-safe or fail secure operation, supporting “On”, “Off”, and “Pulse”
- Inputs and the output relays support assignment to door related functions or to general purpose I/O
- Inputs support normally open, normally closed, supervised and non-supervised circuits
- Output relays are configurable for fail-safe or fail secure operation
- Capable of controlling outboard devices, by the condition of selected system devices locally without ACM intervention



APPLICATION NOTES

The Mercury AC-MER-CONT-MR16IN is an essential component that supports Mercury’s flexible, building-block approach to access control system design. The AC-MER-CONT-MR16IN provides the capacity to link, control and respond to an array of sensors. With its RS-485 connectivity, the AC-MER-CONT-MR16IN can be clustered or distributed to best suit each installation environment.

Specifications

TECHNICAL SPECIFICATIONS	Primary Power	12-24 Vdc +/- 10%, 350mA maximum
	Host Communication	RS-485, 2-wire, 4,000' (twisted pair with shield, Belden 9841)
	Inputs	16 General Purpose: Programmable circuit type 2 Dedicated: Tamper and Power Monitor
	Output Relays	Two Form-C Relays: Normally open contact (NO): 5A @ 30 Vdc resistive Normally closed contact (NC): 3A @ 30 Vdc resistive
	Dimensions	6.0' W x 8.0' L x 1.0' H, (152mm W x 203mm L x 25mm H)
	Temperature	0-70 °C operational, -55-85 °C storage
	Humidity	5 to 95% RHNC
	Standards	UL 294 recognized, CE compliant, RoHS, FCC Part 15 Subpart B
ORDERING INFORMATION	AC-MER-CONT-MR16IN	16 Zone Input Monitor Module (with 2 relays) (Mercury MR16IN-S3)

