

Avigilon Control Center 5 System Integration Guide

with DDS Amadeus 5



© 2012 — 2014 Avigilon Corporation. All rights reserved. Unless expressly granted in writing, no license is granted with respect to any copyright, industrial design, trademark, patent or other intellectual property rights of Avigilon Corporation or its licensors.

AVIGILON, CAPTURE IT WITH CLARITY, HDSM, HIGH DEFINITION STREAM MANAGEMENT (HDSM), THE BEST EVIDENCE and LIGHTCATCHER are unregistered and/or registered trademarks of Avigilon Corporation in Canada and other jurisdictions worldwide. Other product names mentioned herein may be the unregistered and/or registered trademarks of their respective owners. ™ and ® are not used in association with each trademark in this document.

Avigilon
Tel +1.604.629.5182
Fax +1.604.629.5183

<http://www.avigilon.com>

INT-DDS-B: 2014-3-10

Revision: 1

Table of Contents

- Introduction 1**
 - Requirements 1
 - For More Information 1

- Installation 2**
 - Upgrading from Avigilon Control Center 4 2
 - Client 2

- Configuration 3**
 - Assigning Logical IDs to Cameras 3
 - Adding an Integration User in Avigilon 3
 - Setting Up the Integration in Amadeus 5 4

- Using the Integration 6**

Introduction

The Avigilon DDS integration allows you to see live and recorded video from the Avigilon Control Center System in the DDS Amadeus 5 software.

Requirements

Vendor	Requirements
Avigilon	Control Center Server Software 5 and later.
Avigilon	Avigilon DDS integration zip file: Avigilon DDS Amadeus5 Integration.zip The file can be downloaded at http://avigilon.com/support-and-downloads/ for-software/acc-integration-and-plug-in- downloads/
DDS	DDS Amadeus 5 version 2.2 and later

For More Information

For more detailed information about the procedures outlined in this guide, refer to the specific software documentation.

- *Avigilon Control Center Client User Guide*
- *Avigilon Control Center Server User Guide*
- *DDS Amadeus 5 User Manual*

Installation

Upgrading from Avigilon Control Center 4

If you are upgrading to this version of the Avigilon DDS integration software, be aware that this version of the integration is only compatible with Avigilon Control Center 5.

Avigilon Control Center 5 provides the ability to organize multiple servers into Sites and share settings between servers. To use this feature effectively, you must upgrade all servers in your Site before upgrading the integration.

To complete the upgrade, perform the following steps:

1. On each client workstation that uses the integration, close the Amadeus 5 software,
2. Unzip the new version of the integration file in to the Amadeus 5 application folder.
3. Allow Windows to overwrite the old integration files.

Client

- On each workstation that would need access to the integration, unzip a copy of the integration file in the Amadeus 5 application folder.
- Install [Microsoft .NET Framework 4 redistributable](#) on each workstation using the Avigilon DDS Integration.
- Install [DirectX 9.0c redistributable \(June 2007\)](#) on each workstation using the Avigilon DDS Integration.

The Microsoft software can be found on Microsoft.com or by contacting Avigilon Support at support@Avigilon.com.

Configuration

Assigning Logical IDs to Cameras

In the Avigilon Control Center Client software, assign a logical ID to each camera. The Amadeus 5 software will only detect cameras with a logical ID. By default, cameras do not have a logical ID.

1. In the Avigilon Control Center Client software, right-click a camera in the System Explorer and select **Setup**.
2. In the camera Setup tab, click **General**.
3. In the General dialog box, enter a **Logical ID** for the camera.

The logical ID must be unique number.

Adding an Integration User in Avigilon

To protect the security of the Avigilon Control Center Server, add a user to the Avigilon software specifically for connecting to the integration. See the *Avigilon Control Center Client User Guide* for details about how to add users.

This user must have the following permissions to enable all the integration features:

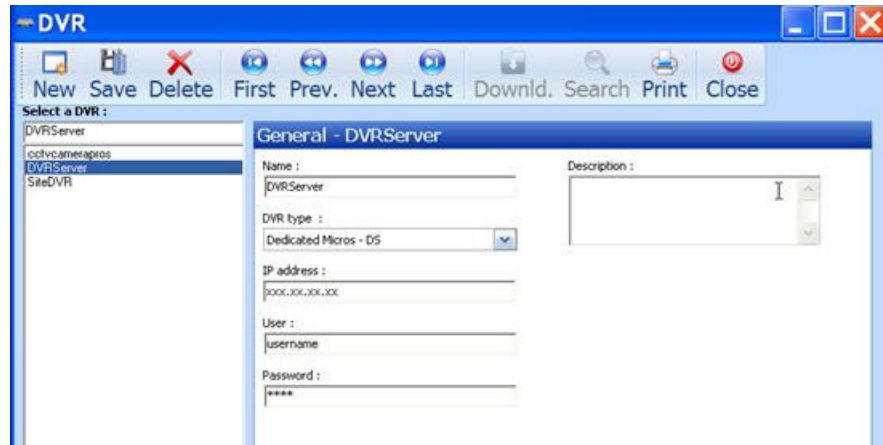
- View live Images
 - Use PTZ
- View recorded Video

The Avigilon DDS integration user name and password is required to add the Avigilon Control Center Server to the Amadeus 5 software as part of the integration.

Setting Up the Integration in Amadeus 5

In the Amadeus 5 software, add Avigilon Control Center servers and cameras to complete the integration.

1. In the Amadeus 5 software, open the DVR dialog box to add the Avigilon Control Center server:

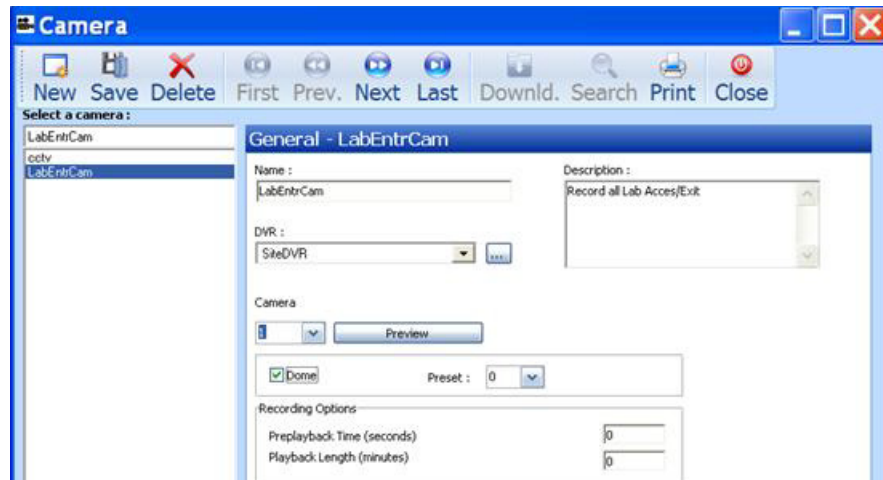


- a. Click **New**.
- b. Give the Avigilon DVR a name and description as required.
- c. In the **DVR Type** drop down list, select Avigilon.
- d. In the **IP address** field, enter the Avigilon Control Center Server IP address.

The server IP address can be found in the server Setup dialog box in the Avigilon Control Center Client software.

- e. Enter the username and password you created in the Avigilon Control Center Client software for the integration. See *Adding an Integration User in Avigilon* on page 3.
- f. Click **Save**.

2. Open the Camera dialog box to add cameras from the Avigilon Control Center system to the Amadeus 5 software:



- a. Click **New**.
- b. Give the camera a name and description as required.
- c. In the DVR drop down list, select the Avigilon Control Center Server you added in *step 1*.
- d. In the camera field, enter the logical ID you assigned to the camera. See *Assigning Logical IDs to Cameras* on page 3 for more information.
- e. If the camera you are adding has pan, tilt and zoom (PTZ) capability, select the **Dome** check box and select a **Preset** position number.

PTZ Preset positions can be configured in the Avigilon Control Center Client software. See the *Avigilon Control Center Client User Guide* for more information.

- f. In the Recording Options area, you can specify the default playback length when video is triggered. See the *DDS Amadeus 5 User Guide* for more information.
- g. Click **Save**.
- h. Repeat *step 2*. until all cameras have been added.

Using the Integration

After the integration has been installed and configured, you can access live and recorded video from Avigilon cameras through the Amadeus 5 software. For more information, see the *DDS Amadeus 5 User Guide*.